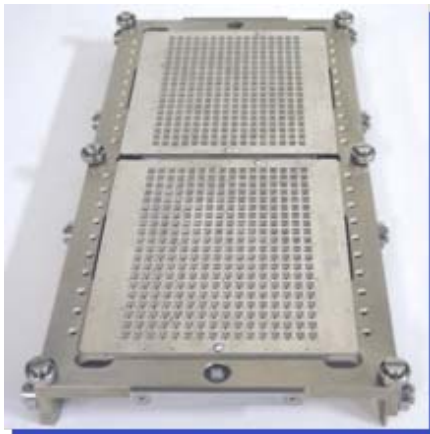
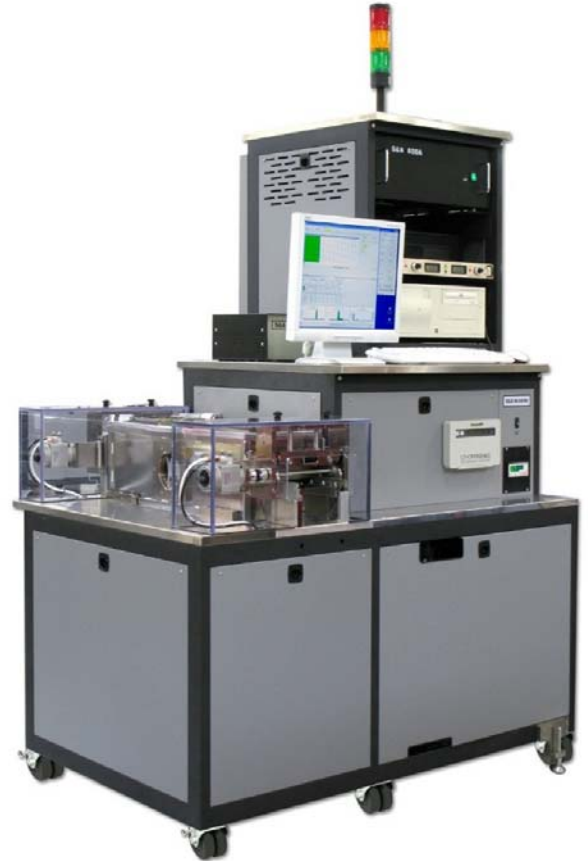


- Linear input to output process flow for easy inline system integration
- Quartz Crystal SMD devices are adjusted to target frequency by Ion Beam Etching of the electrode material
- The motional parameters of the crystal remain virtually unchanged
- Up to thirty-two (32) parts are processed simultaneously for high system throughput
- Small crystal electrodes are as easy to precisely adjust as large electrodes
- High Drive capability
- Measured parameters are checked against easy to define Q.C. limits



Transport Boat

- Supports small SMD sizes including 3.2x5.0, 3.2x2.5, 2.5x2.0, 2.0x1.6, 1.6x1.25
- Transport boats carry SMD devices in S&A flip pallets
- Many pallet matrix configurations available including 16x40, 8x60, 8x30

### SPECIFICATIONS

**250B-1 Frequency Range:**

15 KHz to 220 MHz

**250C Frequency Range:**

15 KHz to 500 MHz

**Etching Performance:**

± 1 ppm typical final frequency

## The Roditi International Corporation Ltd

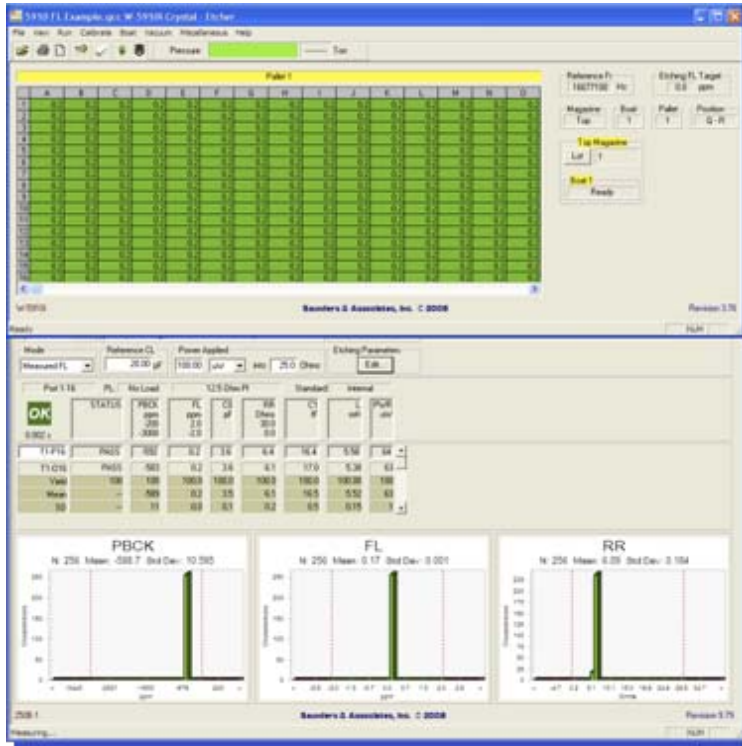
Machiavelli House, 102 Stewarts Road, London SW8 4UG. Tel: +44 (0) 20 7819 8080

Fax: +44 (0) 20 7720 5261. e-mail: [saunders@roditi.com](mailto:saunders@roditi.com) [www.roditi.com](http://www.roditi.com)

## SYSTEM CONFIGURATION

- Two S&A 250B-1 or 250C Network Analyzers
- Direct Drive Roughing Pump
- Cryo Pump
- S&A Dual Channel High Drive
- S&A Ion Gun
- Computer
- *Windows*® based System Software
- Light Pole

## SCREEN FORMAT



## FACILITY REQUIREMENTS

- **Power:** **380VAC/208VAC**  
**3-Phase, 7KVA, 50/60 Hz**
- **Inlet Pressure:** **90 - 100 PSIG**  
**Air: 90 - 100 PSIG**  
**Nitrogen: 70 - 100 PSIG**  
**Process Gas: 20 PSIG**
- **Dimensions:** **W 53" x D 37" x H 88"**

**The Roditi International Corporation Ltd is the exclusive European representative of Saunders & Associates, LLC**