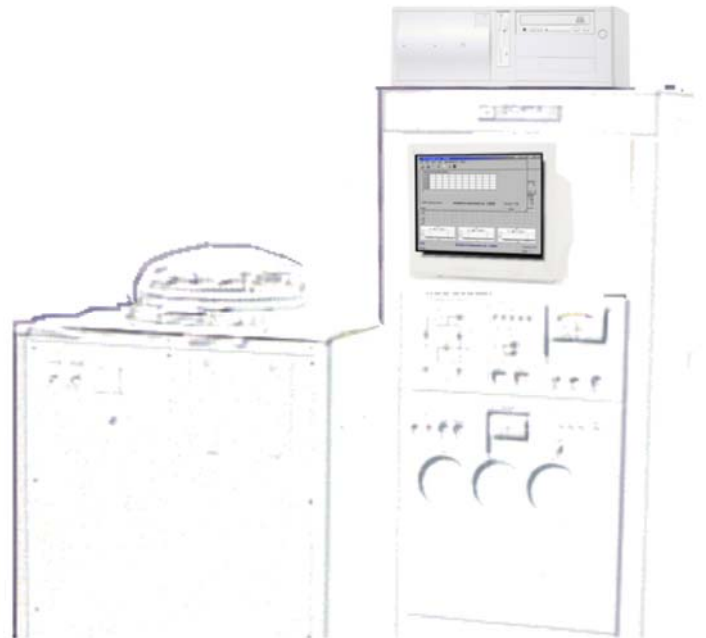


- Extends the frequency range of the SC-6SA Plating System¹ to 400 MHz
- Increases frequency accuracy
- Uses existing filaments and crystal wheels
- Two Pass plating
- Over 10 different oscillator parameter measurements
- Measured parameters checked against user defined QC limits (No ring test required)
- Supports wheels with different number of positions (e.g. 72 or 144)
- Upgrade can be configured for a variety of plating system models



¹ SC-6SA is a trademark of Showa Shinku Corporation, Japan

SPECIFICATIONS

Frequency Range :	1 MHz to 400 MHz
Plating Performance :	± 2 ppm* at series, typical
Typical Process Time (144 Position Wheel) :	10 minutes + pump down time
Oscillator Analyzer :	S&A 280A

* Proprietary measurement and calibration algorithms provide correlation to industry standard crystal measurement equipment.

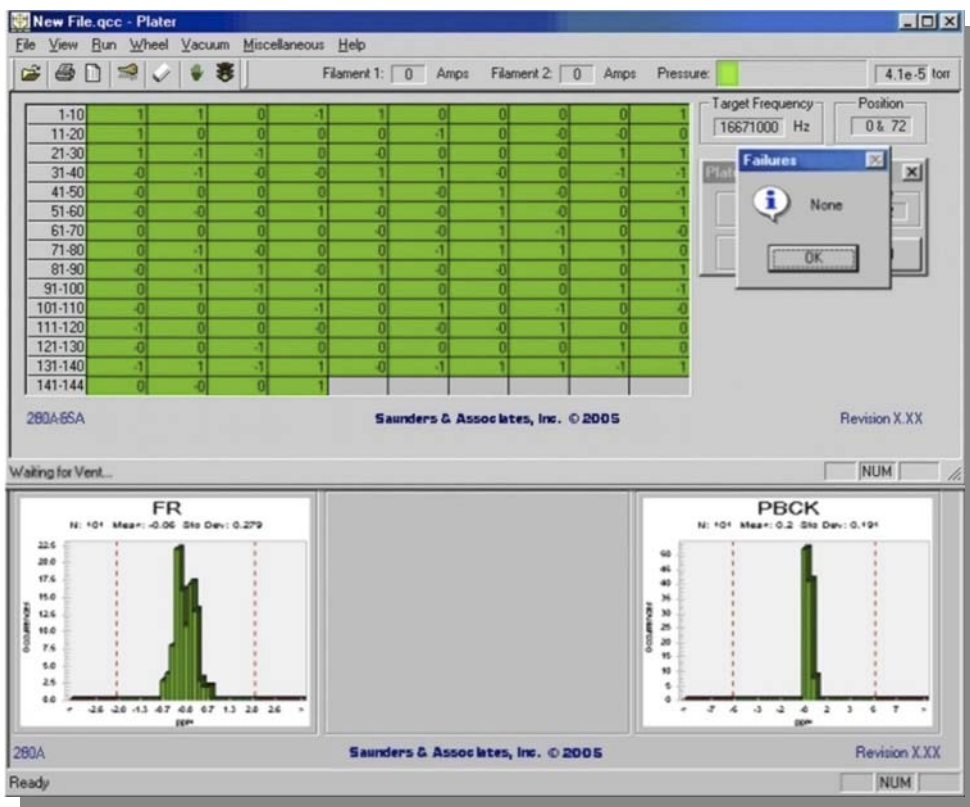
Roditi International Corp. Ltd,

Machiavelli House, 102 Stewarts Road, London. SW8 4UG. Tel: +44 (0) 20 7819 8080
FAX: +44 (0) 20 7720 5261 E-Mail saunders@roditi.com - World Wide Web <http://www.roditi.com>

SYSTEM CONFIGURATION

- S&A 250B/6SA Relay Assembly
- **Windows®** based System Software
- Cabling to accommodate existing DUT connections
- S&A MFC-100
- Computer Requirement:
Minimum 500 MHz Pentium III,
full PCI slot with +5V & 3.3V power

SCREEN FORMAT



The Roditi International Corporation Ltd is the exclusive European representative of Saunders & Associates, LLC